

# VENUE HIRE



ROYAL  
COLLEGE  
OF MUSIC  
*London*





# INTRODUCTION

Located in the heart of London’s South Kensington, following a £40million investment, the Royal College of Music offers a wide range of spaces perfect for events of up to 400 including performances, receptions, dinners, meetings and conferences.

As a charity and place of education, by choosing us for your event, you are supporting us as we develop the next generation of talented musicians.

Our wide range of unique spaces are adaptable and can suit many different events. The new 1851 Courtyard & RCM Café provides a stunning central hub, and leads off to two performance spaces and the spectacular RCM Museum. Our concert halls are purpose-built for performances with sophisticated acoustics and technology. The Britten Theatre, a tiered auditorium, provides a luxurious setting for your performance or conference. Our wood-panelled Parry Rooms are perfect for more intimate events, providing an impressive view of the Royal Albert Hall. Or if you are looking for a blank canvas space, our Performance Studio is the perfect choice.

 3D tour available





OUR VENUES



Amaryllis Fleming Concert Hall



Britten Theatre



The 1851 Courtyard & RCM Café



Performance Hall



Performance Studio



Parry Rooms



RCM Museum



Recital Hall



Belle Shenkman Studio



Jay Mews Studios



# AMARYLLIS FLEMING CONCERT HALL

Capacity:

370

+ 2 wheelchair users  
CONCERTS

280

STANDING RECEPTION

280

CONFERENCE/  
THEATRE STYLE

160

DINNER

The Amaryllis Fleming Concert Hall is the most versatile space at the Royal College of Music. Originally opened in 1901 and fully refurbished in 2009, the Concert Hall is an impressive space with a stunning Flentrop Orgelbouw organ forming the stage's backdrop.

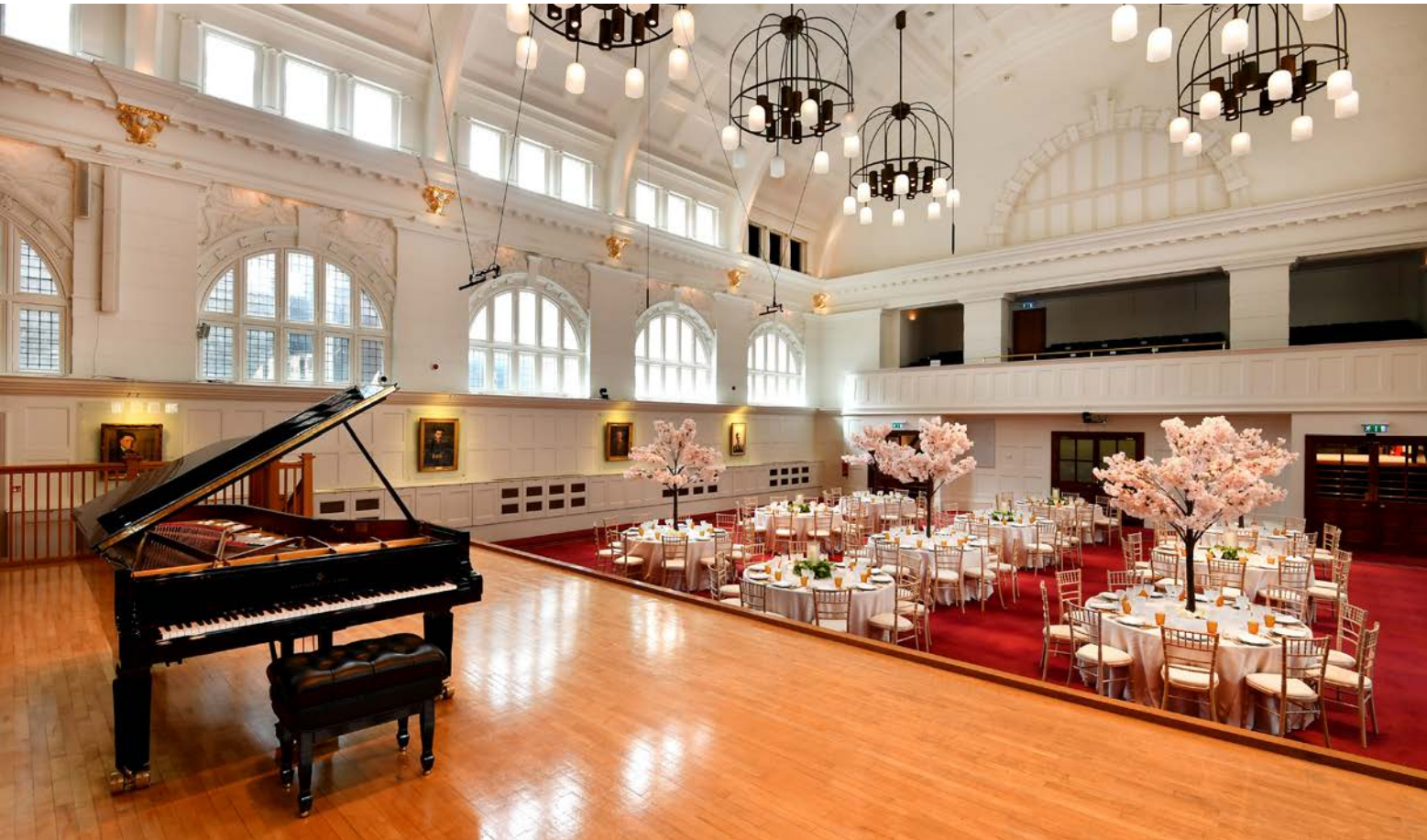
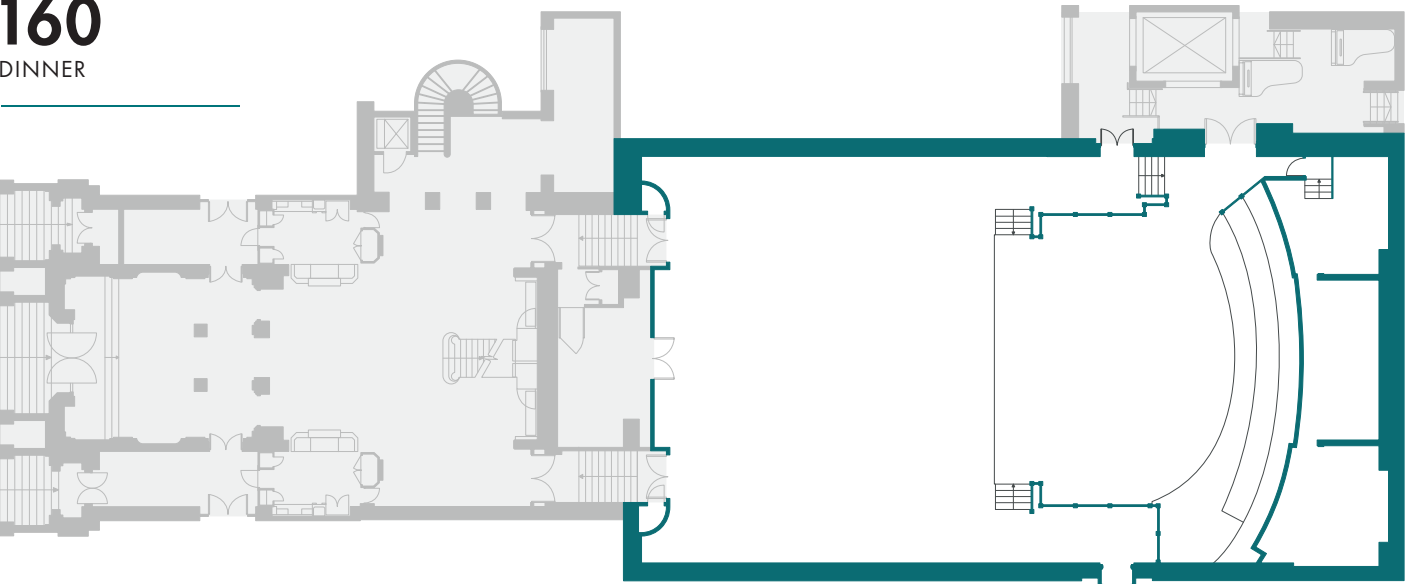
A performance space of the highest international standard, we can accommodate up to 370 audience members and up to 120 performers on stage. Newly installed lighting and sound equipment replicates professional conditions for recording and broadcasting your performance or conference.

The hall is licensed for public concerts and has two Steinway D grand pianos, an organ and a celeste.

We also have risers, Amadeus Opus 1 Musicians' Posture chairs, and music stands available for your performers if you should need them.

As well as performances, the Amaryllis Fleming Concert Hall is a unique setting for your dinner or drinks reception of up to 280 guests. We work with a carefully selected list of approved suppliers to ensure your event runs safely and smoothly. We can also look into the possibility of using a combination of spaces for your event. Many like to use our brand-new courtyard and Café space as a drinks reception before dinner in the Concert Hall.

 3D tour available





# BRITTEN THEATRE

Capacity:

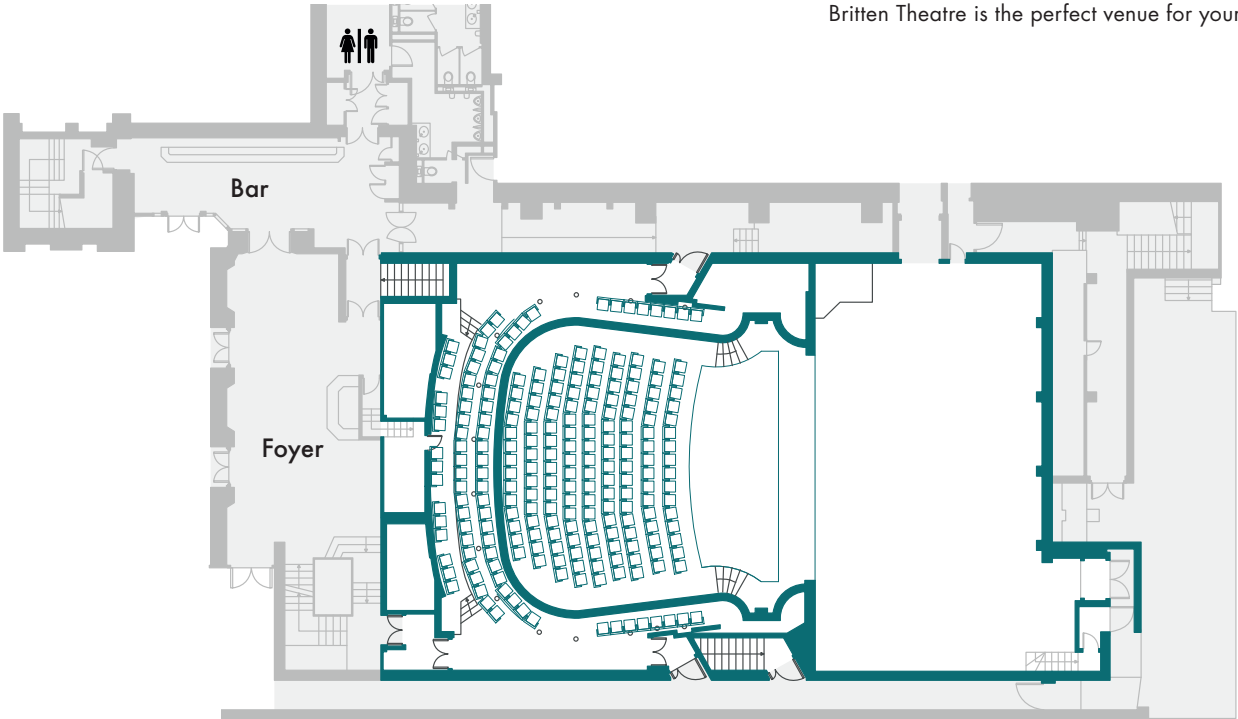
390  
+ 2 wheelchair users  
THEATRE STYLE

3D tour available

The Britten Theatre’s simple elegance, responsive acoustics and intimate tiered auditorium is the perfect space for opera, music, theatre and ballet performances. One of South Kensington’s best kept secrets, the theatre is named after Benjamin Britten, a former student of the RCM. It was designed by Sir Hugh Casson in the style of an Italian opera theatre, with a proscenium arch, orchestra pit and counterweight flying system. It boasts a lighting rig of LED fixtures and an additional stock of lighting available to hire.

The Britten Theatre is licensed for public performances. The theatre is in regular use with excellent technical facilities as the thriving RCM Opera Studio’s focus. It hosts various instrumental performances, including a chamber music series and concerts by the RCM Jazz Orchestra. It also benefits from an orchestra pit for 55 musicians, a Steinway grand piano, two dressing rooms, a bar and The Ruth West Foyer.

Seating up to 390, the theatre is an excellent venue for lectures, presentations and conferences. With extensive technical facilities and support from our experienced Britten Theatre technicians and RCM Studios team, the Britten Theatre is the perfect venue for your event.





# THE 1851 COURTYARD & RCM CAFÉ

Capacity:

280

STANDING RECEPTION


DINNER

70

INSIDE

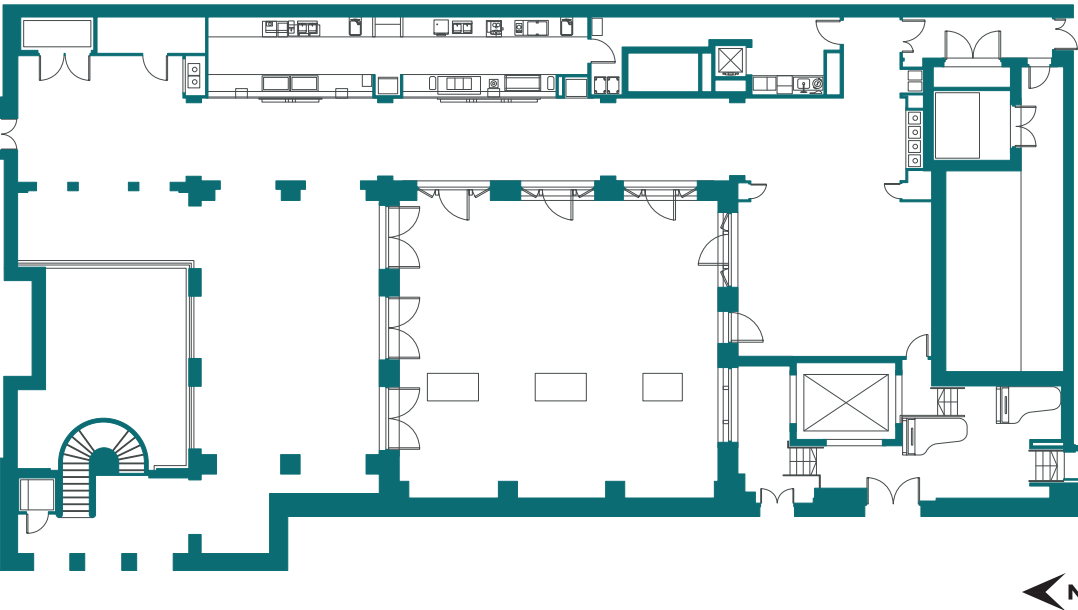
30

EXTERNAL

 3D tour available

Our stunning 1851 Courtyard & RCM Café can host up to 280 people for a standing event. The Courtyard is a stylish and spacious venue full of original features, overlooking the stunning Cotes-Burgan atrium with a high glass ceiling letting in incredible light.

We have a built-in bar which serves food and drinks for performances. We regularly hold recitals and concerts in The 1851 Courtyard, and you are encouraged to book our students to perform as a great addition to any event.





# PERFORMANCE HALL

Capacity:

140

THEATRE STYLE

140

STANDING RECEPTION

70

DINNER

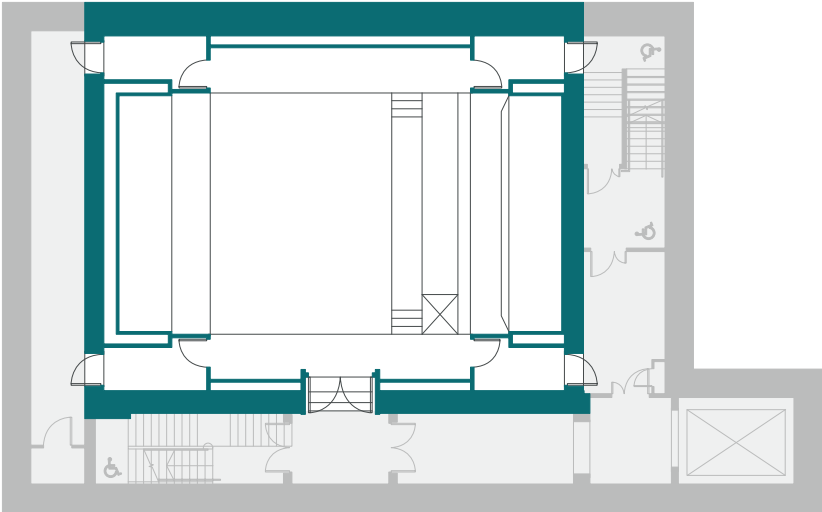
3D tour available

The Performance Hall is one of our newly built venues. It is an elegant space with beautiful wooden lattice panelling encasing state of the art acoustic panelled walls. It is made with smaller, more intimate performances in mind and can accommodate up to 20 performers on stage.

A large screen fills the entire backdrop of the stage, perfect for accompanying artwork or promotional material. The hall is licensed for public concerts and has two grand pianos: one Fazioli and one Steinway D grand. We also have Amadeus Opus 1 Musicians' Posture chairs and music stands available for your performers. With music-making in mind, we also use the space for rehearsals; if you would like to use both the

stage and the floor space, we can accommodate a group of up to 40 musicians.

The Performance Hall seats up to 140 guests theatre style. With the newly installed projector screen, lighting and sound equipment, and technical support from our RCM Studios team, the space is perfect for conferences, presentations, and seminars. We can also provide for breakout rooms throughout the day. This versatile space can also be a unique setting for dinners of up to 70, with stunning architecture providing the perfect backdrop to your event. You may wish to consider a chamber music performance by some of our students during your dinner to make your event extra special.





# PERFORMANCE STUDIO

Capacity:

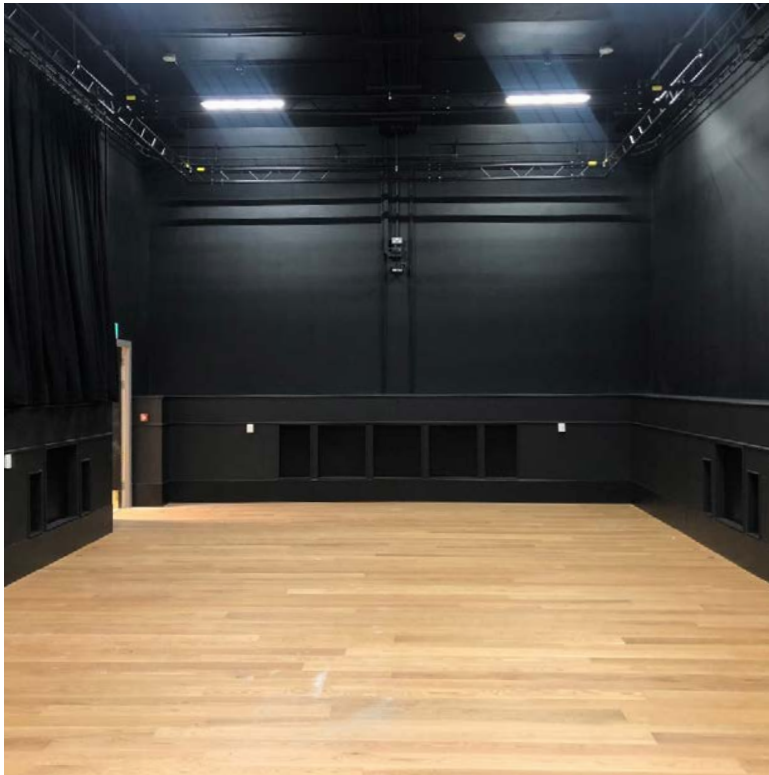
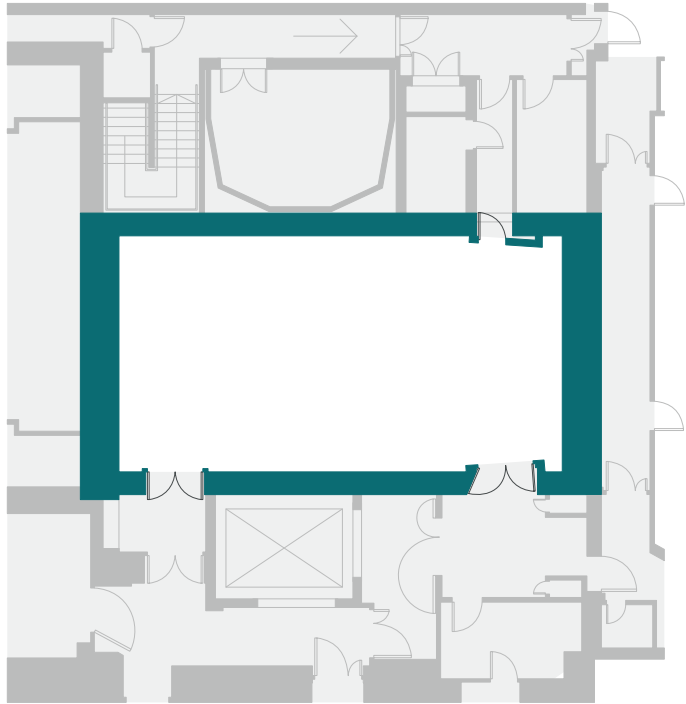
60  
THEATRE STYLE

110  
STANDING RECEPTION

3D tour available

The Performance Studio is the perfect blank canvas for your event, the studio is a black box space that is fully versatile and multi-purpose. Accommodating up to 110 people, it is a great choice for product launches, rehearsals or to be used as a breakout space alongside some of our larger capacity venues.

The studio is also equipped with a harpsichord and chamber organ, focusing on historical performance. We also have Amadeus Opus 1 Musicians' Posture chairs and music stands available for your performers if you should need them.





# PARRY ROOMS

Capacity:

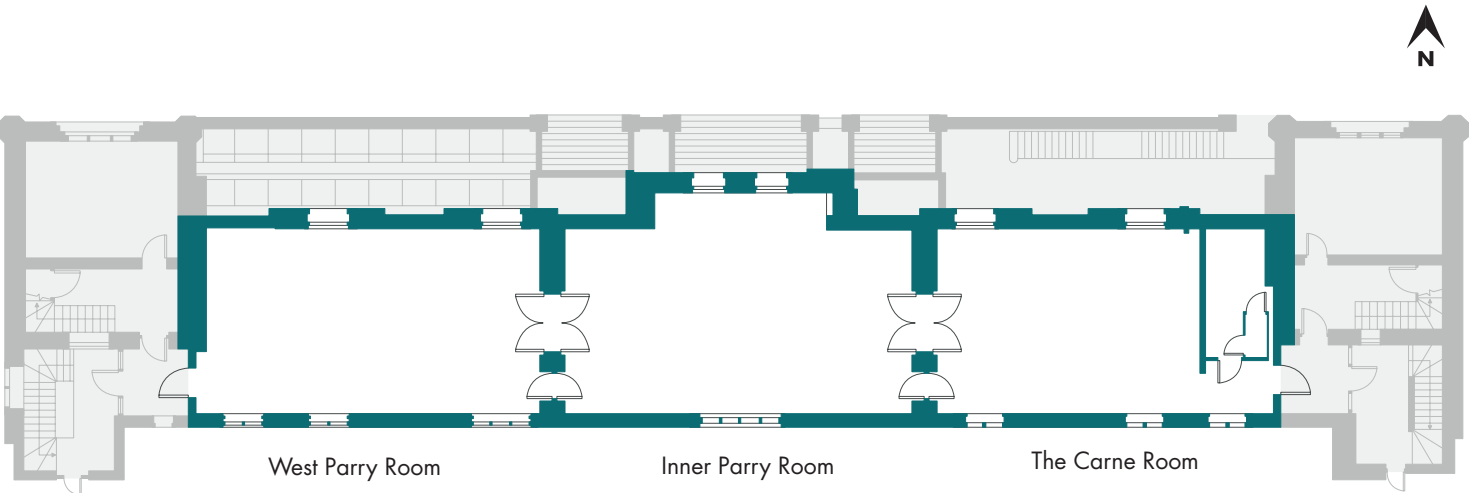
60  
STANDING per room

45  
THEATRE STYLE per room

45 DINNER per room | 90 DINNER across all three rooms

Be taken back to a different time in the stunning wood-panelled Parry Rooms. The Parry Rooms are situated high in the main College building's roof space with unrivalled views of the Royal Albert Hall. A flexible space, the interconnecting sound-proof doors facilitate separate activities or can be opened up to use as one gallery space.

Suitable for your reception or a dinner for up to 90 guests, the Parry Rooms are an impressive setting that will immerse guests in the traditional environment of the College. The interconnecting rooms' flexibility can be beneficial for conferences or team away days, giving you the option of splitting up the spaces and your guests for different activities throughout your event.





# RCM MUSEUM

Capacity:

30  
SEATED

30  
RECEPTION,  
pale drinks only

60  
STANDING with  
reception in Lavery  
Gallery

The Royal College of Music (RCM) Museum opened in Autumn 2021. It contains some of the richest and most relevant music-related objects in the UK and Europe. With more than 14,000 items, the collection represents music-making over a period of more than five centuries. Founded in 1892, it features a vast range of instruments, portraits, engravings, sculptures and photographs.

Following a multi-million pound upgrade and relocation as part of the RCM More Music Campaign, our brand-

new Museum is perfect for intimate dinners of up to 30, drinks receptions, and small, bespoke concerts. It is the ideal setting for a one-of-a-kind event with plenty of exciting and educational conversation points. Tours by our expert team are available to add to any event for an exceptional and unique experience.

The multi-level, fully accessible space includes permanent displays, a temporary exhibition, the Wolfson Centre for research and conservation, and a performance and rehearsal area.





# RECITAL HALL


Capacity:

100

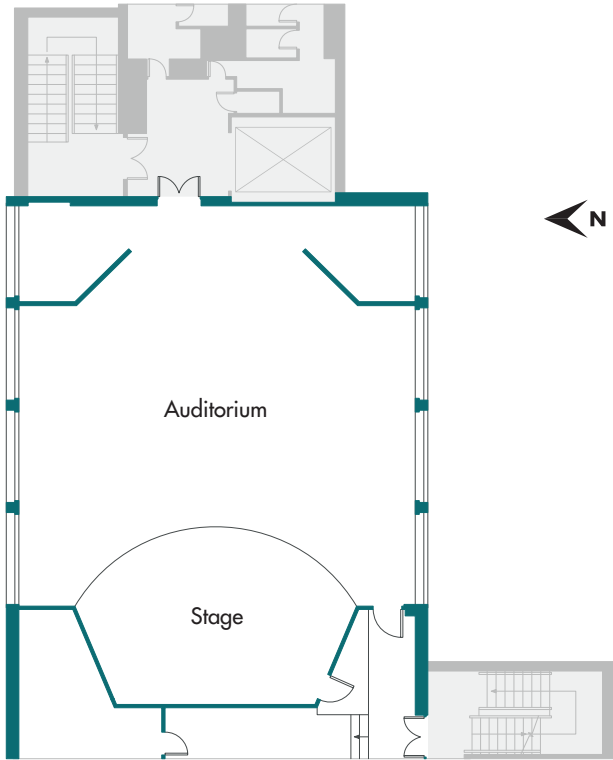
THEATRE STYLE

120

STANDING RECEPTION

 3D tour available

The Recital Hall is a light-filled and spacious venue that can comfortably accommodate up to 120 guests. It is ideal as a performance space for more intimate musical performances, presentations or conferences. The hall has a projector and large dropdown screen for your presentations, it is a functional and multi-purpose space.

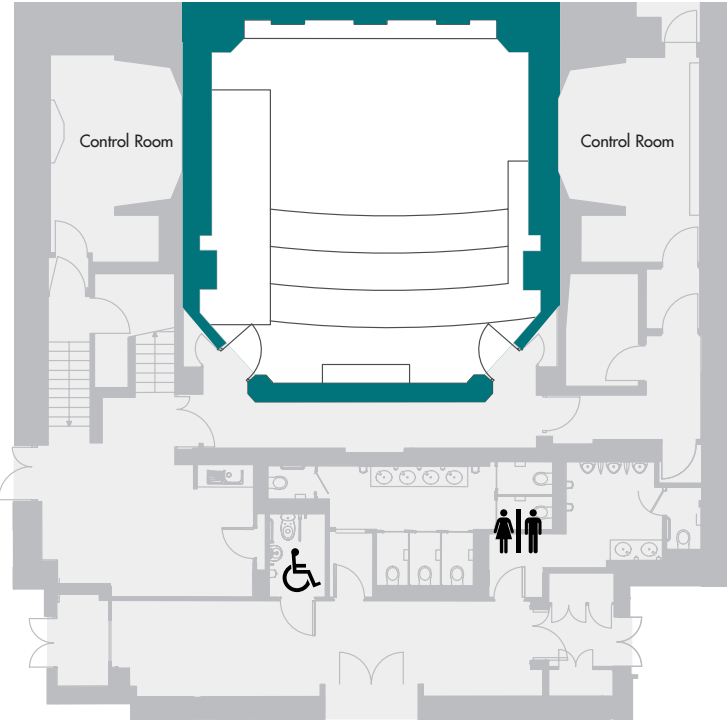




# BELLE SHENKMAN STUDIO

The Belle Shenkman Studio is a live room located directly under the Amaryllis Fleming Concert Hall, with its own Steinway Model D grand piano, three control rooms linked to performance spaces around the campus, and three rooms for composition, production and editing. The studio is a professional classical recording studio, maintained and run by qualified recording engineers.

The Belle Shenkman Studio provides a wide range of professional-quality services and facilities including classical music recording, video production, web streaming, audio-visual research and development, and provision of specialist facilities for screen composers.





# JAY MEWS STUDIOS

Capacity:

200  
UPPER STUDIO

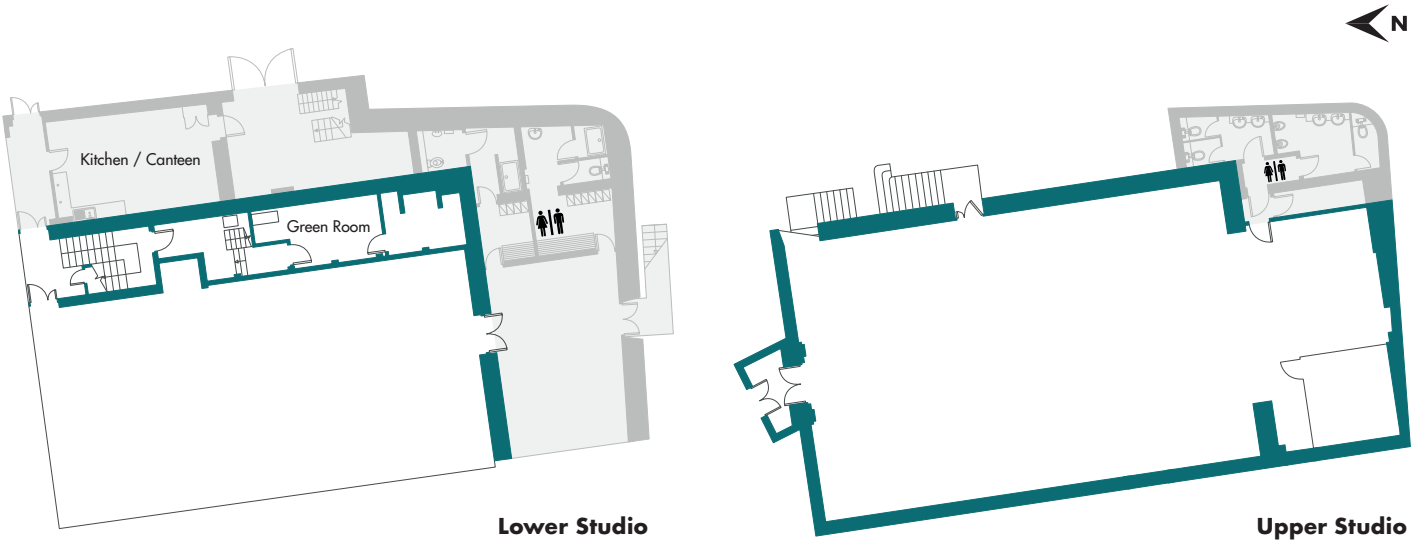
100  
LOWER STUDIO

Spacious, bright and airy, the Jay Mews Studios are perfect spaces for your music, theatre or dance rehearsals conveniently located in the heart of South Kensington.

The studios are located in Markova House, just a few minutes from the Royal College of Music’s main building.

There are two studios, the Upper and Lower studios. Both areas are equipped with Steinway D Grand pianos, have mirrored walls with a ballet bar, and access to bathroom and changing facilities.

Suitable for rehearsals.





# HIRE RATES

Please note, all our prices are subject to VAT at the prevailing rate

VENUE	CAPACITY	DAY RATE	4 HOURS RATE (INC. SET UP & PACK DOWN)	EVENING RATE
Amaryllis Fleming Concert Hall	Theatre style: 370 +2 wheelchair users seated Standing: 280 Conference / Theatre Style: 280 Dinner: 120	£4,950 Inc. Café as reception space after closing: £5,700	£3,950	
The 1851 Courtyard	Standing: 280 Dinner: 70 inside, 30 external	£4,500 (can only be used during the day out of term time)		£3,750
Performance Hall	Theatre style: 140 Standing: 140 Dinner: 70	£2,950 Inc. Café as reception space after closing: £3,700	£2,250	
Performance Studio	Theatre style: 60 Standing: 110	£2,200 Inc. Café as reception space after closing: £2,500	£1,800	
Britten Theatre	Theatre style: 390 +2 wheelchair users (fixed seating)	£4,950 Inc. Café as reception space after closing: £5,700	£4,250	
Museum	Standing: 30, pale drinks only Seated: 12 Inc. reception in Lavery Gallery: 100			£2,750 (can only be used after hours)
Recital Hall	Theatre style: 100 Standing: 120	£1,750	£1,250	
Parry Rooms	Standing: 60 per room Theatre style: 45 per room Dinner: 45 per room / 90 across all three rooms	One room: £2,750 Two rooms: £3,500	One room: £2,000 Two rooms: £2,500	
Jay Mews Studios	Upper Studio: 200 Green Room / 50 Rehearsal Lower Studio: 100 Green Room / 50 Rehearsal	3 x Studios + 2 x rooms: £2,000 1 x Studio: £1,300	3 x Studios + 2 x rooms: £1,450 1 x Studio: £1,000	



# RCM MUSICIAN HIRE

The Royal College of Music offers the opportunity to hire RCM musicians for your event.

RCM musicians are available for performances and background music at corporate functions, ceremonies, private parties and events. A wide range of soloists and ensembles are available and bookings are tailored to suit individual requirements. A high emphasis is placed on the musicians’ presentation, professionalism and appropriate programming. We also engage musicians for freelance orchestral work, recording sessions and provide accompanists, composers and arrangers.

To discuss suitable musicians for your event and to book freelance orchestral musicians, please contact our creative careers department [engagements@rcm.ac.uk](mailto:engagements@rcm.ac.uk) | 020 7591 4845. Fees are negotiated according to requirements of each particular event. The RCM is in line with current industry rates.

Soloists and ensembles available for hire include the following:

## CLASSICAL

- Solo classical pianist
- String duo, trio and quartet
- Cello duo
- Solo harp, harp duo, harp quartet
- Harp and flute/violin/cello
- Wind trio and quintet
- Solo guitar, guitar duo, guitar and flute/violin
- Saxophone quartet
- Trombone quartet
- Brass quintet / dectet
- Vocal soloist and quartet / octet

## JAZZ

- Solo jazz pianist (with own keyboard)
- Jazz duo – keyboard and double bass/saxophone/trumpet, guitar duo
- Jazz trio – keyboard, double bass and saxophone/trumpet, OR keyboard, double bass and drum kit (or Cajón box drum)
- Jazz quartet – keyboard, double bass, drum kit and saxophone/trumpet
- Jazz quintet – keyboard, double bass, drum kit, saxophone/trumpet and voice (with PA hire)

## CONTEMPORARY, WORLD & PERIOD

- Solo marimba, marimba duo
- Folk ensemble – combinations of singer, flute, guitar, viola and bodhran drum
- Function band, solo voice and guitar
- Solo lute, lute and countertenor duo
- Recorder quartet, Baroque violin and cello duo
- Fanfare trumpets





# ACCREDITED SUPPLIERS

## CATERERS

### Alexander and Björck

Eva Berntsson  
020 3457 1700  
parties@alexanderandbjorck.com  
www.alexanderandbjorck.com  
@alexanderandbjorcklondon

### Food by Dish

Hannah Mitchell  
07753 393320  
hannah.mitchell@foodbydish.com  
www.foodbydish.com  
@foodbydish

### Food Show Ltd.

Oliver Barnett  
0207 793 1877  
oliver@foodshowltd.com  
www.foodshowltd.com  
@foodshowltd

### Imperial College Catering

Anna Lusby  
020 7594 5908  
a.lusby@imperial.ac.uk  
www.imperial.ac.uk/events-and-hospitality/

### Moving Venue

Ben Paris  
0208 691 6661  
bparis@movingvenue.com  
www.movingvenue.com  
@movingvenue

## FLORISTS

### Lavender Green

020 7127 5303  
info@lavendergreen.co.uk  
www.lavendergreen.co.uk  
@lavendergreenflowers

### Pinstripes & Peonies

Ruari McCulloch  
0207 720 1245  
flowers@pinstripesandpeonies.com  
www.pinstripesandpeonies.com  
@pandpflowers

### Wild About

Leanne Roberts-Hewitt  
0203 794 7487  
info@wildabout.co.uk  
www.wildabout.co.uk  
@wildaboutflower

## PRODUCTION

### Autograph

Andrew Hedges  
020 7485 4515  
andyh@autograph.co.uk  
www.autograph.co.uk  
@autographlondon

### Delta Live

Sarah Brundell  
0208 3393800  
Enquiries@deltalive.com  
www.deltalive.com  
@deltaliveonline

### Whitelight Ltd.

020 8254 4870  
Events@whitelightltd.uk  
www.whitelight.ltd.uk  
@whitelightltd





# GETTING HERE

The Royal College of Music is located in South Kensington, one of London’s most important cultural quarters. As such we enjoy excellent transport links.

Our main reception and venues are found here:

Royal College of Music  
Prince Consort Road  
London SW7 2BS

## TRAVELLING BY CAR

The Royal College of Music is currently outside the Congestion Charge/ULEZ zone, but ensure you check your route before you travel.

Parking near the RCM

Other car parks and street parking are available in South Kensington, but spaces are often limited. Check availability and restrictions before you travel.

There are designated motorbike bays in the area surrounding the Royal Albert Hall.

Disabled parking bays

There are a limited number of disabled parking bays managed by Westminster Borough Council on Prince Consort Road and in the area around the Royal Albert Hall, which are within 175 metres of the RCM. In addition, there are spaces managed by the Royal Borough of Kensington and Chelsea on Exhibition Road, which are within 600 metres of the RCM.

## TRAVELLING BY RAIL

National Rail

The closest mainline stations are London Paddington and London Victoria. The RCM can be reached from any London terminal by Underground, bus or taxi.

Underground

The closest station is South Kensington (Circle, District and Piccadilly lines), which is a 10–15 minute walk from the RCM.

Gloucester Road (Circle, District and Piccadilly lines) is a 15 minute walk from the RCM. High Street Kensington station (Circle and District lines) is a 20 minute walk or 10 minutes by bus.

Night Tube services run on the Piccadilly line on Friday and Saturday evenings, providing Underground connections from South Kensington and Gloucester Road throughout the night.

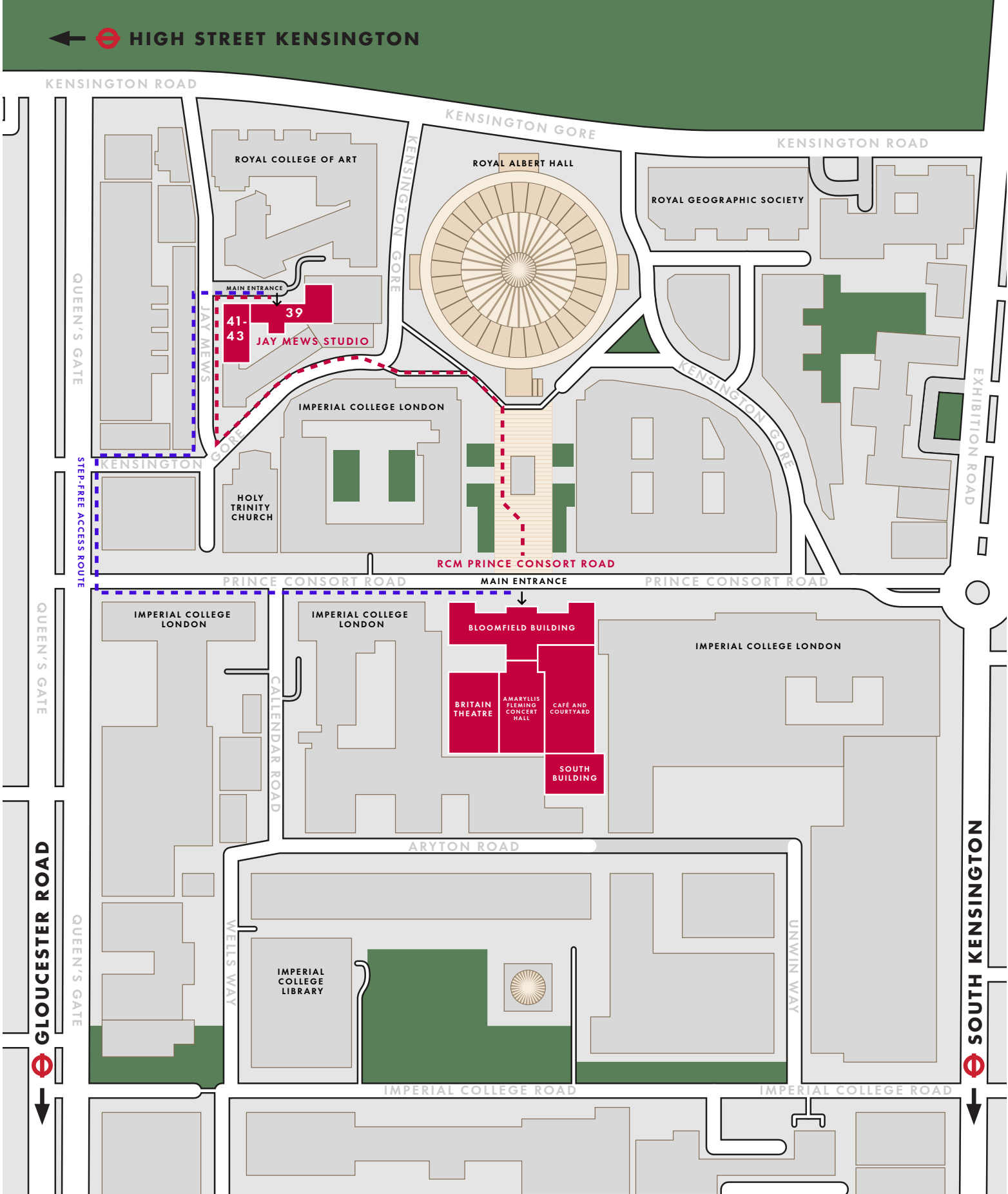
## TRAVELLING BY BUS

Bus number 360 stops directly outside the RCM on Prince Consort Road.

Buses 9, 23, 52 and 452 pass the Royal Albert Hall.

The number 70 travels along Queen’s Gate.

A comprehensive system of night buses operates between Central London and the rest of the city. The N9 passes the Royal Albert Hall and connects with other major routes at Trafalgar Square.







ROYAL  
COLLEGE  
OF MUSIC  
*London*

Royal College of Music  
Prince Consort Road  
London SW7 2BS

+44 (0)20 7591 4300  
venuehire@rcm.ac.uk

[venuehire.rcm.ac.uk](https://venuehire.rcm.ac.uk)

@rcm\_venuehire

**President**  
His Majesty King Charles III

**Chairman**  
Lord Black of Brentwood

**Director**  
Professor Colin Lawson  
CBE, MA (Oxon), MA,  
PhD, DMus, FRCM,  
FRNCM, FLCM, HonRAM

The Royal College of Music  
is a registered charity.  
No 309268